

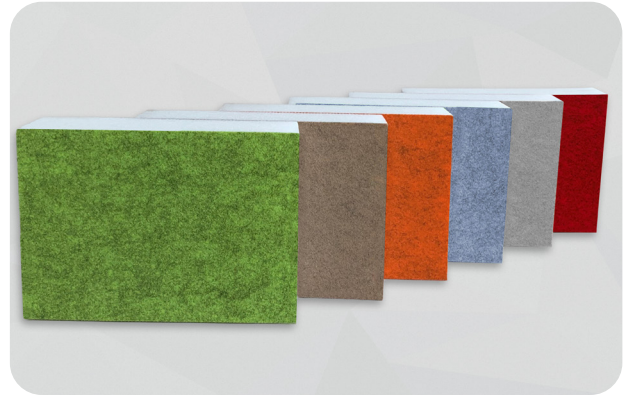
DATA SHEET

POLYESTER NON-WOVEN

POLYESTER NON-WOVEN

soni COLOR | soni COLOR RD

- ▶ Our **soni COLOR** sound absorber consists of a white polyester non-woven that is laminated with a subtly structured felt material in attractive trend colors. The acoustic panels set lovely color accents and create a pleasantly quiet atmosphere.
- ▶ **soni COLOR RD** is our sound absorber in the dimension 620 x 620 mm for convenient insertion into already existing standard grid ceilings or Odenwald-system ceilings (OWA). It consists of a sound-absorbing white polyester non-woven layer laminated with a thin, marbled felt surface in the latest trend colors.



TECHNICAL DATA

| | |
|------------------------------------------|----------------------------------------------------------------------------------------------------------------------------------------------------------------------------------------------------------------------------------------------------------------------------|
| FLAMMABILITY | <ul style="list-style-type: none"> ▶ DIN EN 13501-1: C-S2 d0* ▶ DIN EN 13501-1: B-S1, d0 ▶ Fulfills the strict fire safety standard for the automotive industry (FMVSS 302, DIN 75 200) ▶ ISO 3795, burning rate < 100 mm/min |
| TEMPERATURE RESISTANCE | ▶ -30°C to +100°C |
| COLORFASTNESS TEST OF FELT COVER | ▶ DIN EN ISO 105-B02: 6-7 |
| ABRASION RESISTANCE OF FELT COVER | ▶ ISO 12947-2: > 50.000 rubs |
| COLOR | <ul style="list-style-type: none"> ▶ Orange ▶ Green ▶ Beige ▶ Blue ▶ Light grey ▶ Pink ▶ Anthracite ▶ Red  Directly to the product Color selection |

*glued on plaster board with soni SPECIAL ADHESIVE, or fixed with soni VELCRO TAPE

DIMENSIONS

| PRODUCT | THICKNESS [mm] / TOLERANCE | SHEETS / TOLERANCE [mm] | WEIGHT PER SHEET |
|----------|----------------------------|-------------------------|------------------|
| COLOR | 50 ± 10% | 1000 X 500 ± 5 | 800 g |
| COLOR RD | 50 ± 10% | 620 X 620 ± 5* | 615 g |

*Other grid dimensions on request

ADVICE

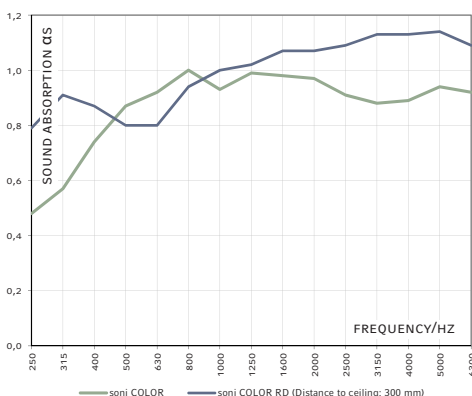
- ▶ There might be minimal color variations between different lots
- ▶ For a noticeable improvement of the room's acoustics, we recommend lining 30-50 % of the ceiling / wall surfaces with the acoustic panels.

BENEFITS

- ▶ High sound absorption values / Optimized room acoustics
- ▶ Excellent flammability characteristics
- ▶ High durability and good shape stability
- ▶ Free of mineral fibers, physiologically safe, no emission of formaldehyde
- ▶ High ageing stability

REVERBERATION ROOM

- ▶ Based on DIN EN ISO 354



APPLICATIONS

- ▶ **soni COLOR RD** acoustic elements considerably reduce the noise level in interior spaces and contribute to improving the acoustic conditions in offices, meeting rooms or doctor's offices. Also schools, daycare centers and kindergartens will strongly profit from the noise reduction effect of **soni COLOR RD**.
- ▶ Especially suitable for all noise-reduction applications calling for compliance with fire protection requirements.



Ceiling: soni COLOR RD / Wall: soni COLOR

PLEASE SEE OUR PROCESSING AND STORAGE INSTRUCTIONS

Details and values given in this leaflet are average values and have been compiled with care. They are not binding, however, and Cellofoam International GmbH & Co. KG disclaims any liability for any damages and detriments, also in connection with any third party's rights. The information given does not release the buyers from making the necessary experiments and tests themselves. Subject to technical changes. For updates please go to our website.

Cellofoam International GmbH & Co. KG
 Business unit soniflex
 P: +49 7351 340 28 61
 sales@soniflex.de / www.soniflex.de

VERSION 01/21

Distribution partner for Switzerland:
 soniflex Switzerland
 P: +41 44 377 60 50
 einkauf@soniflex.ch / www.soniflex.ch